

# Welcome to the CHARM-EU World café

6th September 2022 | 2pm to 4pm CET



## What is a World Café?

The *World Café* approach is a simple and flexible format for hosting group dialogues between students and external actors. It is a creative process for sharing knowledge and creating possibilities for action.

The World Café is a CHARM-EU initiative with the aim to define problem spaces and challenges to work in the first preparatory phase of the Master's programme: in the Preparatory Phase, external actors collaborate with student teams and academics to define and explore potential sustainability challenges.

This contributes both to the **students' learning process** as well as the **impact and involvement of society** in European Higher Education.

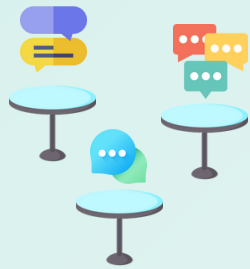
## How does it work?

In the *World café* there are tables with: a host (the facilitator), external actors and students. At every table one of the three masters' themes is discussed (Food, Water and Life and Health). Students can **join the table** for a discussion on the theme with the **external actors**.

At the end of the session the problem space has been further defined and important factors, actors, variables and elements are identified. When the time is up students leave and join another table for next round.

## Why should you join us on the World café?

- Become part of a **new CHARM-EU Expanded Network** where society and Higher Education are brought together, the network might open EU research funding opportunities in the future;
- **Develop your network** with (extra) academic actors from your field or a related one;
- Meet talented students that could be **recruited for internships, traineeships, or professional positions** at your company or organization in the future;
- **Learn new, topical insights and knowledge** in your field of expertise to boost your professional development;
- **Cross-pollinate and connect to diverse perspectives** to gain refreshing new insights on the latest sustainability challenges, including by exploring opportunities for potential (optional) engagement in the Preparatory Phase and further collaborations later in the Master's as students work towards potential solutions.



Co-funded by the  
 Erasmus+ Programme  
 of the European Union



» [Register here!](#)

*The CHARM-EU world café*

## WHAT'S THE PROBLEM?

*Problem spaces definition around  
 masters' themes*

**Online via MS teams**

**6th September from 14:00 to 16:00 CET**

*For any question, please contact [info@charm-eu.eu](mailto:info@charm-eu.eu)*

Kick-off CHARM-EU World Café	h 14:00
Opening plenary session	
World Café session 1	h 14:10
2 discussion rounds (15min each)	
Break	h 14:45
World Café session 2	h 15:00
2 discussion rounds (15min each)	
World Café Grand finale: Share, scoop & shift	h 15:35
Opening plenary session	